

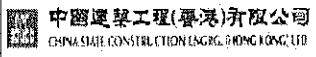
Activity Name	Original Duration	Planned Start	Planned Finish	2011				2012				2013				2014				2015				2016	
				Q3	Q4	Q1	Q2	Q3	Q4	Q1	Q2	Q3	Q4	Q1	Q2	Q3	Q4	Q1	Q2	Q3	Q4	Q1	Q2		
HY/2009/15 - CWB TUNNEL (CBTS SECTION)																									
SUBMISSIONS COMPLYING WITH EPs																									
EM&A Manual (rely on the Master EP's submission EP-364/2009/A Condition 2.9)																									
Baseline Monitoring Report (rely on the Master EP's submission EP-364/2009 Condition 3.3)																									
Monthly EM&A (rely on the masters EP's Submission, EP-364/2009/A Condition 3.4)																									
A dedicated website (rely on the master EP's submission, EP-364/2009/A Condition 4.2)																									
Management organization of main construction companies (FEP Condition 2.6)	1d	02-Oct-10	02-Oct-10																						
Work Schedule (FEP Condition 2.7)	1d	27-Oct-10	27-Oct-10																						
Location Plan (FEP Condition 2.8)	1d	27-Oct-10	27-Oct-10																						
Noise Management plan (FEP Condition 2.9)	1d	27-Oct-10	27-Oct-10																						
Landscape plan (FEP condition 2.10)	1d	31-Jan-11	31-Jan-11																						
EAST VENTILATION ADIT																									
CCT @ Portion 1, 2, 4, 6, 22	1315d	27-Sep-10	03-May-14																						
EV Adit @ Portion 4-Advance Works	526d	27-Sep-10	05-Mar-12																						
EV Adit Portion 1, 2, 6, 22	26d	22-Dec-11	16-Jan-12																						
EV Adit-based on Conforming Design	323d	15-Feb-12	02-Jan-13																						
TCBR1E (TS1 Area)																									
Diaphragm Wall Construction (incl. SI, & tests after completion)	107d	26-Apr-11	10-Aug-11																						
Excavation & Lateral Support, ELS	99d	16-Jul-11	22-Oct-11																						
Cut & Cover Tunnel Construction (incl. backfill)	78d	22-Oct-11	07-Jan-12																						
OHVD and Cable Trough (access from Portion 22)	76d	18-Dec-13	03-Mar-14																						
TCBR2 + TCBR3 (TS2 Area)																									
Diaphragm Wall Construction	118d	06-Jul-12	31-Oct-12																						
Excavation & Lateral Support, ELS	248d	06-Jul-12	10-Mar-13																						
Cut & Cover Tunnel Construction	164d	11-Mar-13	21-Aug-13																						
OHVD Cable Trough (Access from Portion 22)	150d	05-Aug-13	01-Jan-14																						
TCBR1W (TS4 Area)																									
Diaphragm Wall Construction	148d	28-Jun-11	22-Nov-11																						
Excavation & Lateral Support, ELS	319d	26-Jun-11	11-May-12																						
Landing Steps - Demolition/Reconstruct as footpath	40d	28-Jun-11	23-Aug-11																						

- ◆ Milestone
- ◆ Milestone
- Remaining Work
- Critical Remaining Work
- Actual Work

1 of 2

China State Construction Engineering (Hong Kong) Ltd.
Contract No. HY/2009/15 - Central Wan Chai By Pass - Tunnel
(CBTS Section)

Prepared by William Caluza			
Date	Revision	Checked	Approved
14-Mar-11	Revision C	ST	KL
	File: GC01a		
	(Layout:HY/2009/15: CWB - Summary)		



Activity Name	Original Duration	Planned Start	Planned Finish	2011												2012				2013				2014				2015				2016
				Q3	Q4	Q1	Q2	Q3	Q4	Q1	Q2	Q3	Q4	Q1	Q2	Q3	Q4	Q1	Q2	Q3	Q4	Q1	Q2	Q3	Q4	Q1	Q2	Q3	Q4			
Rock Excavation	235d	25-Apr-12	15-Dec-12																													
ME4-Diaphragm Wall	114d	10-May-12	19-Oct-12																													
AS Logistics Area for Mined Tunneling Works	174d	01-Jun-12	07-Feb-13																													
ME4-ELS Works	212d	01-Jun-12	02-Apr-13																													
SCL Entrusted Works	291d	18-Jul-12	08-Sep-13																													
Cut & Cover Tunnel Construction (w/o TS4 +)	111d	17-Dec-12	06-Apr-13																													
ME4-RC Structure	140d	28-Jan-13	21-Aug-13																													
OHVD and Cable Trough (Access from TZ5/TPCWAE/TPCWAW)	180d	17-Jun-13	13-Dec-13																													
MINED TUNNEL																																
CHT Protection Works @ location A, B, C	342d	27-Sep-10	01-Feb-12																													
Tunnel works from West Portal (access from TPCWAE & TZ5)	418d	12-Mar-12	30-Oct-13																													
Tunnel Works from East Portal (Access from TS4 Area)	214d	30-Mar-12	01-Feb-13																													
Tunnel OHVD & Cable Trough	384d	02-Dec-13	22-May-15																													
TPCWAE																																
Drainage Diversion works along Hung Hing Road (Portion 19)	170d	15-Oct-10	24-Jun-11																													
Diaphragm Wall Construction	147d	20-May-11	13-Oct-11																													
Excavation & Lateral Support, ELS	421d	20-May-11	13-Jul-12																													
Rock Excavation	208d	12-Mar-12	03-Oct-12																													
AS Logistics Area for Mined Tunneling works	342d	12-May-12	18-Apr-13																													
Cut & Cover Tunnel Construction	130d	28-Jan-13	06-Jun-13																													
OHVD and Cable Trough (Access from TZ5/TPCWAW)	182d	18-Feb-15	18-Aug-15																													
TPCWAW & PORTION 11																																
Diaphragm Wall Construction + Portion 11	222d	25-Oct-13	03-Jun-14																													
Excavation & Lateral Support, ELS	478d	25-Oct-13	14-Feb-15																													
Cut & Cover Tunnel Construction	143d	30-Dec-14	21-May-15																													
OHVD and Cable Trough Installation (Access from Portion 11)	235d	22-May-15	11-Jan-16																													

- ◆ Milestone
- ◆ Milestone
- Remaining Work
- Critical Remaining Work
- Actual Work

2 of 2

China State Construction Engineering (Hong Kong) Ltd.

Contract No. HY/2009/15 - Central Wan Chai By Pass - Tunnel

(CBTS Section)

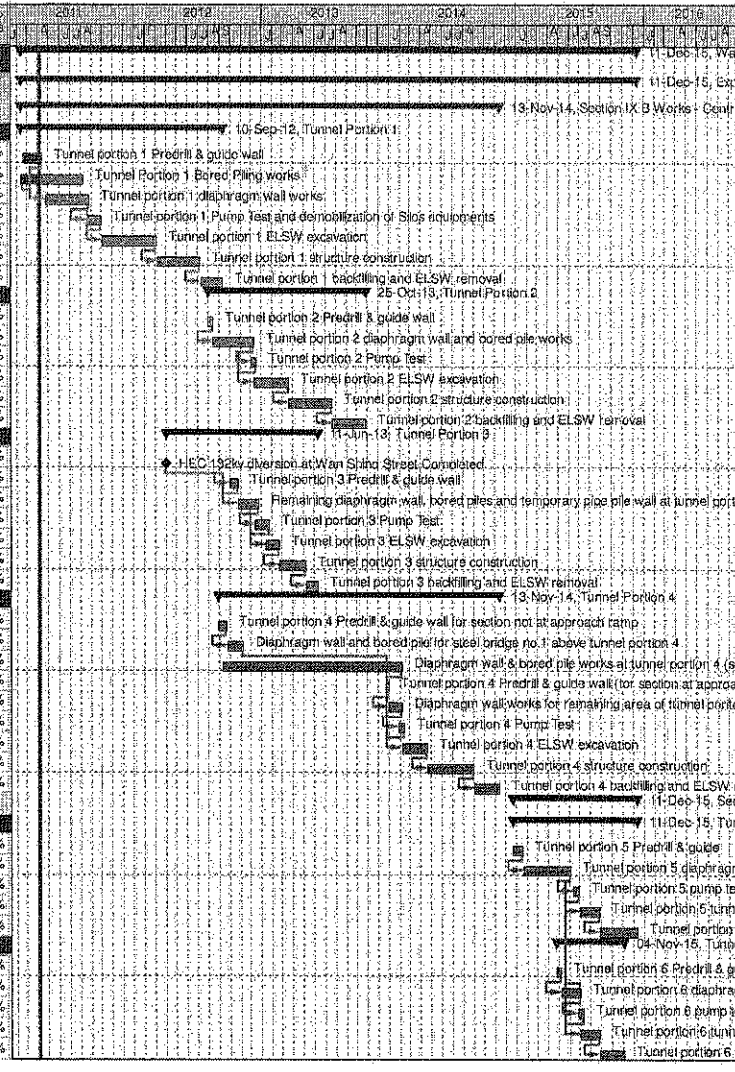
Prepared by William Galuza			
Date	Revision	Checked	Approved
14-Mar-11	Revision C	ST	KL
	File: 0001a		
	(Layout: HY/2009/15: CWB - Summary)		



Wan Chai Development Phase II - Central - Wan Chai
Bypass at Wan Chai East CONTRACT HK/2009/02

CHUN WO - CRGL JV

Activity ID	Activity Name	OD	Plan	Finish	% Planned	2011	2012	2013	2014	2015	2016
Wan Chai Development Phase II - Central - Wan Chai Bypass at Wan Chai East											
Expanded and More Detailed Initial Works Programme											
Section IX B Works - Central - Wan Chai Bypass Tunnel Structure from chainage 3400 to eastern tunnel											
Tunnel Portion 1											
S9B-T1-0005	Tunnel portion 1 Predrill & guide wall	10	18-Feb-11	13-Apr-11	40%						
S9B-T1-0007	Tunnel Portion 1 Bored Piling works	105	08-Feb-11	08-Aug-11	0%						
S9B-T1-0010	Tunnel portion 1 diaphragm wall works	105	26-Apr-11	27-Aug-11	0%						
S9B-T1-0015	Tunnel portion 1 Pump Test and demobilization of Slos equipments	35	20-Aug-11	30-Sep-11	0%						
S9B-T1-0020	Tunnel portion 1 ELSW excavation	130	03-Oct-11	07-Mar-12	0%						
S9B-T1-0030	Tunnel portion 1 structure construction	100	09-Mar-12	09-Jul-12	0%						
S9B-T1-0040	Tunnel portion 1 backfilling and ELSW removal	54	10-Jul-12	10-Sep-12	0%						
Tunnel Portion 2											
S9B-T2-0105	Tunnel portion 2 Predrill & guide wall	10	02-Aug-12	13-Aug-12	0%						
S9B-T2-0010	Tunnel portion 2 diaphragm wall and bored pile works	100	14-Aug-12	10-Dec-12	0%						
S9B-T2-0015	Tunnel portion 2 Pump Test	14	03-Dec-12	18-Dec-12	0%						
S9B-T2-0020	Tunnel portion 2 ELSW excavation	80	11-Dec-12	19-Mar-13	0%						
S9B-T2-0030	Tunnel portion 2 structure construction	100	20-Mar-13	22-Jul-13	0%						
S9B-T2-0040	Tunnel portion 2 backfilling and ELSW removal	80	23-Jul-13	25-Oct-13	0%						
Tunnel Portion 3											
S9B-T3-0005	HEC 132kv diversion at Wan Shing Street Completed	0	01-Apr-12*		0%						
S9B-T3-0008	Tunnel portion 3 Predrill & guide wall	20	02-Oct-12	25-Oct-12	0%						
S9B-T3-0010	Remaining diaphragm wall, bored piles and temporary pipe pile wall at tunnel portion 3	50	25-Oct-12	22-Dec-12	0%						
S9B-T3-0015	Tunnel portion 3 Pump Test	30	15-Dec-12	22-Jan-13	0%						
S9B-T3-0020	Tunnel portion 3 ELSW excavation	30	15-Jan-13	20-Feb-13	0%						
S9B-T3-0030	Tunnel portion 3 structure construction	80	21-Feb-13	08-May-13	0%						
S9B-T3-0040	Tunnel portion 3 backfilling and ELSW removal	30	07-May-13	11-Jun-13	0%						
Tunnel Portion 4											
S9B-T4-0005	Tunnel portion 4 Predrill & guide wall for section not at approach ramp	21	30-Aug-12	22-Sep-12	0%						
S9B-T4-0010	Diaphragm wall and bored pile for steel bridge no. 1 above tunnel portion 4	40	24-Sep-12	10-Nov-12	0%						
S9B-T4-0020	Diaphragm wall & bored pile works at tunnel portion 4 (section not at approach ramp)	420	11-Sep-12	05-Feb-14	0%						
S9B-T4-0025	Tunnel portion 4 Predrill & guide wall (for section at approach ramp)	5	23-Dec-13	30-Dec-13	0%						
S9B-T4-0030	Diaphragm wall works for remaining area of tunnel portion 4 (for section at approach ramp)	30	31-Dec-13	06-Feb-14	0%						
S9B-T4-0035	Tunnel portion 4 Pump Test	14	28-Jan-14	14-Feb-14	0%						
S9B-T4-0040	Tunnel portion 4 ELSW excavation	60	07-Feb-14	19-Apr-14	0%						
S9B-T4-0050	Tunnel portion 4 structure construction	110	22-Apr-14	01-Sep-14	0%						
S9B-T4-0060	Tunnel portion 4 backfilling and ELSW removal	60	02-Sep-14	13-Nov-14	0%						
Section X Works - Central - Wan Chai Bypass Tunnel Structure from western tunnel to chainage 3400											
Tunnel Portion 5											
S10-T5-0005	Tunnel portion 5 Predrill & guide	21	23-Dec-14	19-Jan-15	0%						
S10-T5-0010	Tunnel portion 5 diaphragm wall & bored pile works	110	20-Jan-15	04-Jun-15	0%						
S10-T5-0015	Tunnel portion 5 pump test	14	13-Jun-15	30-Jun-15	0%						
S10-T5-0020	Tunnel portion 5 tunnel ELSW excavation	45	04-Jul-15	25-Aug-15	0%						
S10-T5-0030	Tunnel portion 5 tunnel structure construction	90	26-Aug-15	11-Dec-15	0%						
Tunnel Portion 6											
S10-T6-0040	Tunnel portion 6 Predrill & guide	12	24-Apr-15	08-May-15	0%						
S10-T6-0050	Tunnel portion 6 diaphragm wall & bored pile works at Area 10	45	09-May-15	09-Jul-15	0%						
S10-T6-0055	Tunnel portion 6 pump test	14	25-Jun-15	11-Jul-15	0%						
S10-T6-0060	Tunnel portion 6 tunnel ELSW excavation at Area 10	45	04-Jul-15	26-Aug-15	0%						
S10-T6-0070	Tunnel portion 6 tunnel structure construction at Area 10	58	26-Aug-15	04-Nov-15	0%						



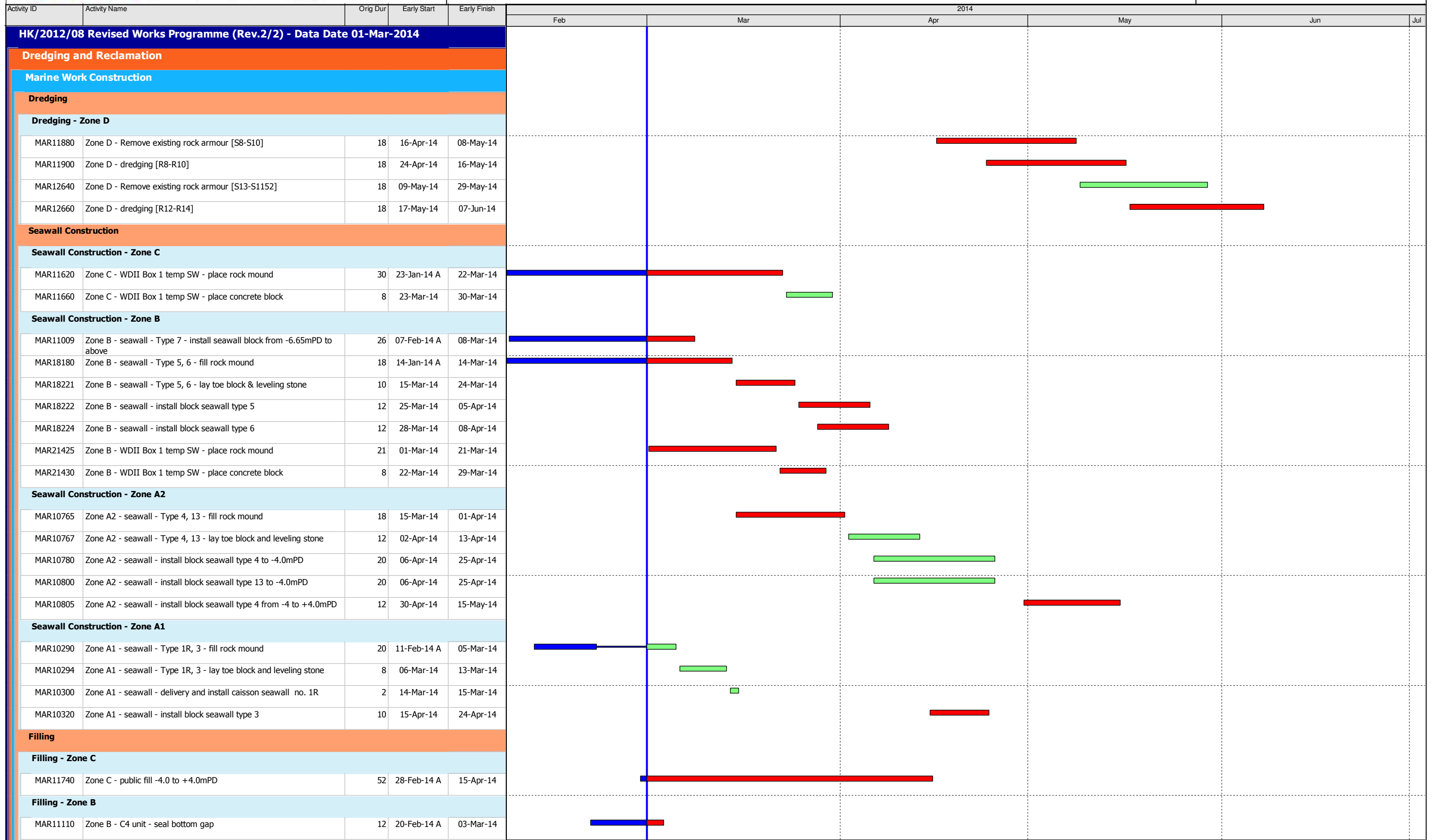
和 - 中國中鐵聯合
 Chun Wo - CRGL JOINT VENTURE

Remaining Level of Effort Milestone
 Actual Level of Effort Summary
 Actual Work
 Remaining Work
 Critical Remaining Work

CEDD CONTRACT NO. HK/2009/02
 Wan Chai Development Phase II - Central Wan Chai Bypass at Wan Chai East (Contract 2)
 Revised Programme dated 7 April 2011

Date	Revision	Checked	Approved
07-Apr-11		KT	KY

Page 10 of 11



Data Date: 01-Mar-14

- ◆ Current Milestone
- Actual Work
- Critical Remaining Work
- Remaining Work
- Remaining Level of Effort

3-Month Rolling Programme for Works outside CRIII Area
(Mar 2014 to May 2014)

Date	Revision	Checked	Approved
01-Mar-14	Rev. 2		



Activity ID	Activity Name	Orig Dur	Early Start	Early Finish	2014						
					Feb	Mar	Apr	May	Jun	Jul	
MVB Substructure - Diaphragm Wall and Sheetpile Wall											
SII10425	Sec II - MVB - Set up predrill rigs and preparation for predrilling	6	03-Mar-14	08-Mar-14							
SII10430	Sec II - MVB - D-wall construction preparation and silo setup	44	08-Mar-14	20-Apr-14							
SII10440	Sec II - MVB - predrilling and ground pretreatment for Dwall	102	05-Mar-14	10-Jul-14							
SII10460	Sec II - MVB A - construct guide wall [P1-P13, P33-P41]	150	21-Mar-14	22-Sep-14							
SII10480	Sec II - MVB A - construct Dwall [P1-P13, P33-P41] (1.5m thk on rock)	150	21-Apr-14	20-Oct-14							
SII10520	Sec II - MVB B - construct guide wall [P14-P32]	66	18-Mar-14	10-Jun-14							
SII10540	Sec II - MVB B - construct Dwall [P14-P32] (1.5m thk on rock)	150	21-Apr-14	20-Oct-14							
Section II A - CWB Tunnel & Slip Road Structures and Facilities											
Section II A - CWB Tunnel - Design, Submission and Approval											
SIIA10460	CWB Tunnel - MS for DWall Construction - Eng comment & approve	28	16-Jan-14 A	06-Mar-14							
CWB A2 & B											
CWB A2 & B - Dwall Construction											
SIIA11460	Sec II A - CWB B: Predrilling for Dwall & piles	78	29-Mar-14	07-Jul-14							
SIIA11480	Sec II A - CWB B: Ground treatment	120	17-Apr-14	08-Sep-14							
SIIA11500	Sec II A - CWB B: construct Guide Wall	60	22-Apr-14	04-Jul-14							
SIIA11520	Sec II A - CWB B: construct DWall and barrette (1.2m thk on rock)	96	17-May-14	08-Sep-14							
SIIA13340	Sec II A - CWB A2(1): Predrilling for Dwall & piles	50	16-May-14	15-Jul-14							
SIIA13360	Sec II A - CWB A2(1): ground pretreatment	46	16-May-14	10-Jul-14							
SIIA13380	Sec II A - CWB A2(1): Guide Wall	50	16-May-14	15-Jul-14							
Section VI B - Area 8											
Area 8 - Demolish Ex. Cooling Water Pumping Station											
SVIB10000	MS of cooling water pump station demolition Works - prepare and submit	60	03-Dec-13 A	26-Mar-14							
SVIB10020	MS of cooling water pump station demolition - ICE check and issue check cert	14	27-Mar-14	16-Apr-14							
SVIB10040	MS of cooling water pump station demolition Works - Eng comment and approve	28	27-Mar-14	23-Apr-14							
SVIB10070	Sec VI B - site clearance, u/g utilities detection	12	16-Apr-14	29-Apr-14							
SVIB10080	Sec VI B - demolish existing air duct	30	30-Apr-14	06-Jun-14							
Section VI C - Area 3, 6, 8A & 8C											
Area 8A & 8C - Seawall Modification (Reviewed)											
Design Submission & Approval											
PRS-1000	Sec VI C - Temp Work Design for Seawall Modification - Prepare and submit to ICE	90	20-Nov-13 A	15-Mar-14							
PRS-1002	Sec VI C - Temp Work Design for Seawall Modification & MTR Pump Room Stabilization - ICE check and issue check cert.	14	17-Mar-14	01-Apr-14							
PRS-1004	Sec VI C - Temp Work Design for Seawall Modification & MTR Pump Room Stabilization - Engineer / MTR comment and approve	28	17-Mar-14	22-Apr-14							
Tenders for Sub-contractor and Procurement											
Sub11040	Sec VI C - Prepare Sub-contract for Seawall Modification and Procurement of Materials	90	23-Apr-14	09-Aug-14							
Section VI D - Area 8B & 10											
WDII Box 1 Construction (Reviewed)											
WDII Box 1 Submission and Approval / Material Procurement											
S0721020	Sec VI D - WD II Box 1 - temp work design - prepare and submit	180	03-Jul-13 A	23-Apr-14							
S0721040	Sec VI D - WD II Box 1 - temp work design - ICE check and issue check cert	28	24-Apr-14	21-May-14							
S0721060	Sec VI D - WD II Box 1 - temp work design - Engineer comment and approve	28	22-May-14	18-Jun-14							



Activity ID	Activity Name	Orig Dur	Early Start	Early Finish	2014						
					Feb	Mar	Apr	May	Jun	Jul	
Section VIII - Landscape Softworks											
Soft Landscaping Works											
SVIII10020	Sec VIII - Tree Felling/Transplanting at Portion 2 & 2A	90	20-Nov-13 A	12-Jun-14							
Section X - Protection & Preservation of Trees											
Soft Landscaping Works											
SX10020	Sec X - Protection & Preservation of Trees	1632	31-Jan-13 A	20-Jul-17							

Data Date: 20-Feb-14

HY/2009/18 Central - Wan Chai Bypass (Central Interchange)

TASK filters: 3 Months_1, Not HL.

Activity ID	Activity Name	Original Duration	Start	Finish	Total Float	2014			
						Feb	Mar	Apr	May
Update 2013-10-20 CWB - Central Interchange (2014-02-20) Revised DWP R5a									
PRELIMINARIES									
Major TTA's in Operation									
3750	TTA Stage 3 Operation - Man Po St. Temporary Junction	511	21-Oct-11 A	13-Mar-14	0	[Green bar from Feb 21 to Mar 13]			
3760	TTA Stage 4 Operation - Man Yiu St. Diversion	472	24-Feb-12 A	27-Feb-14	0	[Green bar from Feb 24 to Feb 27]			
3770	TTA Stage 5a & 5b Operation	322	28-Feb-14	15-Jan-15	14	[Green bar from Feb 28 to Jan 15]			
Design									
Temporary Works Design									
ELS - Trough A									
1174	ELS - ELS Trough A Prepare Design	52	09-Apr-14	30-May-14	14	[Yellow bar from Apr 9 to May 30]			
Procurement, Shop Drawing, Manufacture & Delivery									
Excavation & Lateral Support									
1172	ELS - Wailing & Shoring Material Sourcing, Procurement and Delivery (Retaining Wall)	30	20-Feb-14	21-Mar-14	188	[Yellow bar from Feb 20 to Mar 21]			
Interfacing									
Interfacing with CWB Route Wide & TCSS Contract									
1765	CWB Route Wide - Prepare & Submit Interfacing Management Plan with CWB Route Wide	28	20-Feb-14*	19-Mar-14	107	[Yellow bar from Feb 20 to Mar 19]			
1773	CWB Route Wide - Review & Endorse Interfacing Management Plan	28	20-Mar-14	16-Apr-14	107	[Yellow bar from Mar 20 to Apr 16]			
1775	CWB Route Wide - Engineer Review & Approve Interfacing Management Plan	28	17-Apr-14	14-May-14	107	[Yellow bar from Apr 17 to May 14]			
Establishment, Mobilisation & Advanced Works									
Temporary Traffic Management, Site Establishment / Setup									
Stage 5a1 (Divert Traffic on Tunnel Structure)									
1316	Stage 5a1 - RWA	7	20-Feb-14	27-Feb-14	0	[Red bar from Feb 20 to Feb 27]			
1204	Stage 5a1 - Closure of Man Po Street Temporary Junction & Slip Road	0	28-Feb-14		0	[Blue diamond on Feb 28]			
1116	Stage 5a1 - Demolish Man Kwong St. To Finance St. Slip Road	12	28-Feb-14	13-Mar-14	0	[Red bar from Feb 28 to Mar 13]			
SECTION 3A - ALL TUNNEL WORKS IN PORTION IIIB									

- ◆ Current Milestone
- Critical Remaining Work
- Level of Effort
- Remaining Work
- ▲ Baseline Milestone
- Project Baseline
- Actual Work

Leighton Contractors (Asia) Limited Programme Update 41 (February 2014) THREE MONTH ROLLING

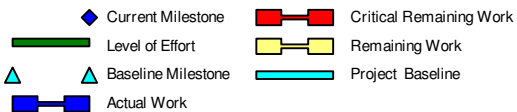
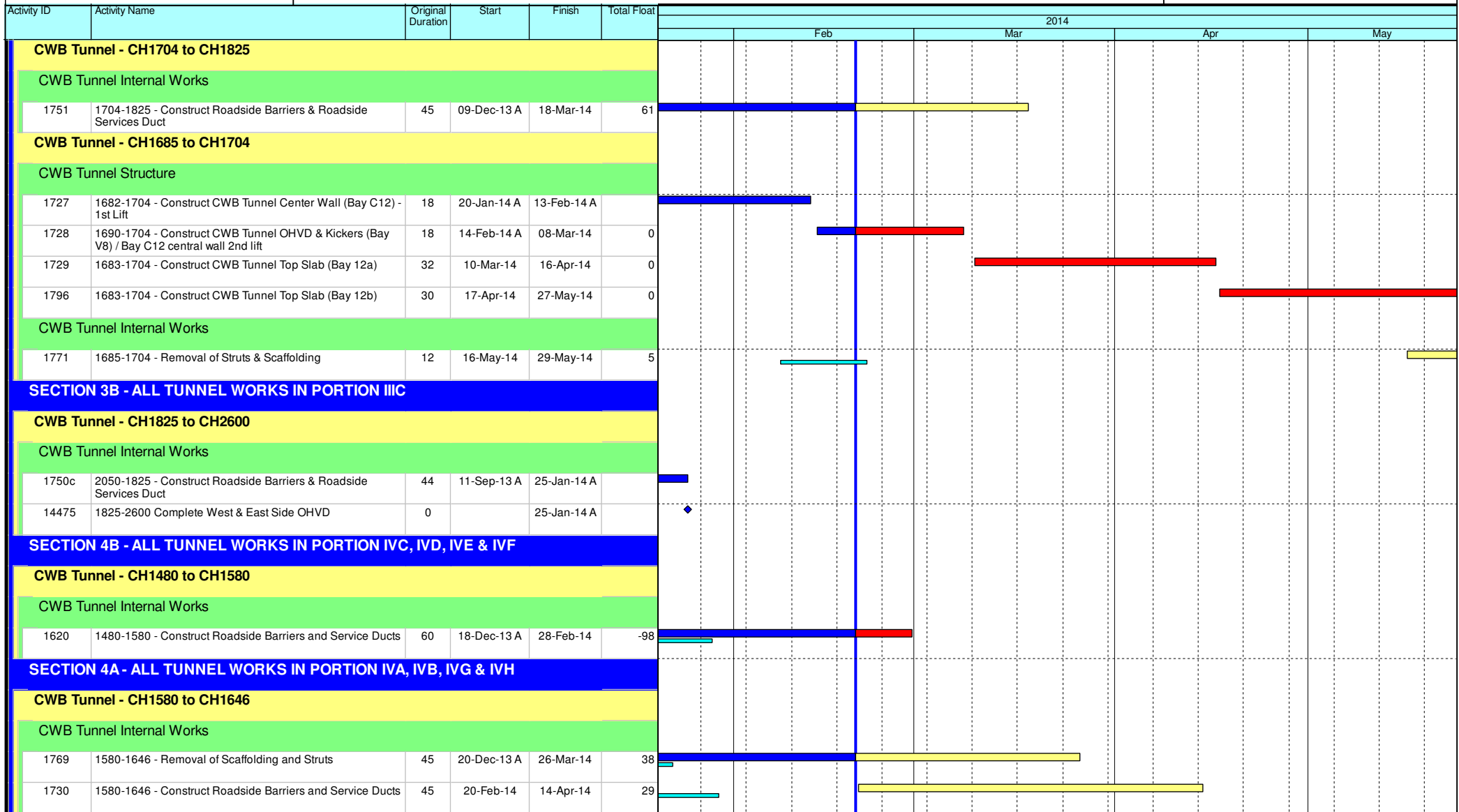
Project ID: U041
 Baseline: DCP6-2
 Layout: Update Three Month Rolling U041
 Page 1 of 7

Date	Revision	Checked	Appro...
20-Jan-14	U040	AT	RW
20-Feb-14	U041	AT	RW

Data Date: 20-Feb-14

HY/2009/18 Central - Wan Chai Bypass (Central Interchange)

TASK filters: 3 Months_1, Not HL.



Leighton Contractors (Asia) Limited Programme Update 41 (February 2014) THREE MONTH ROLLING

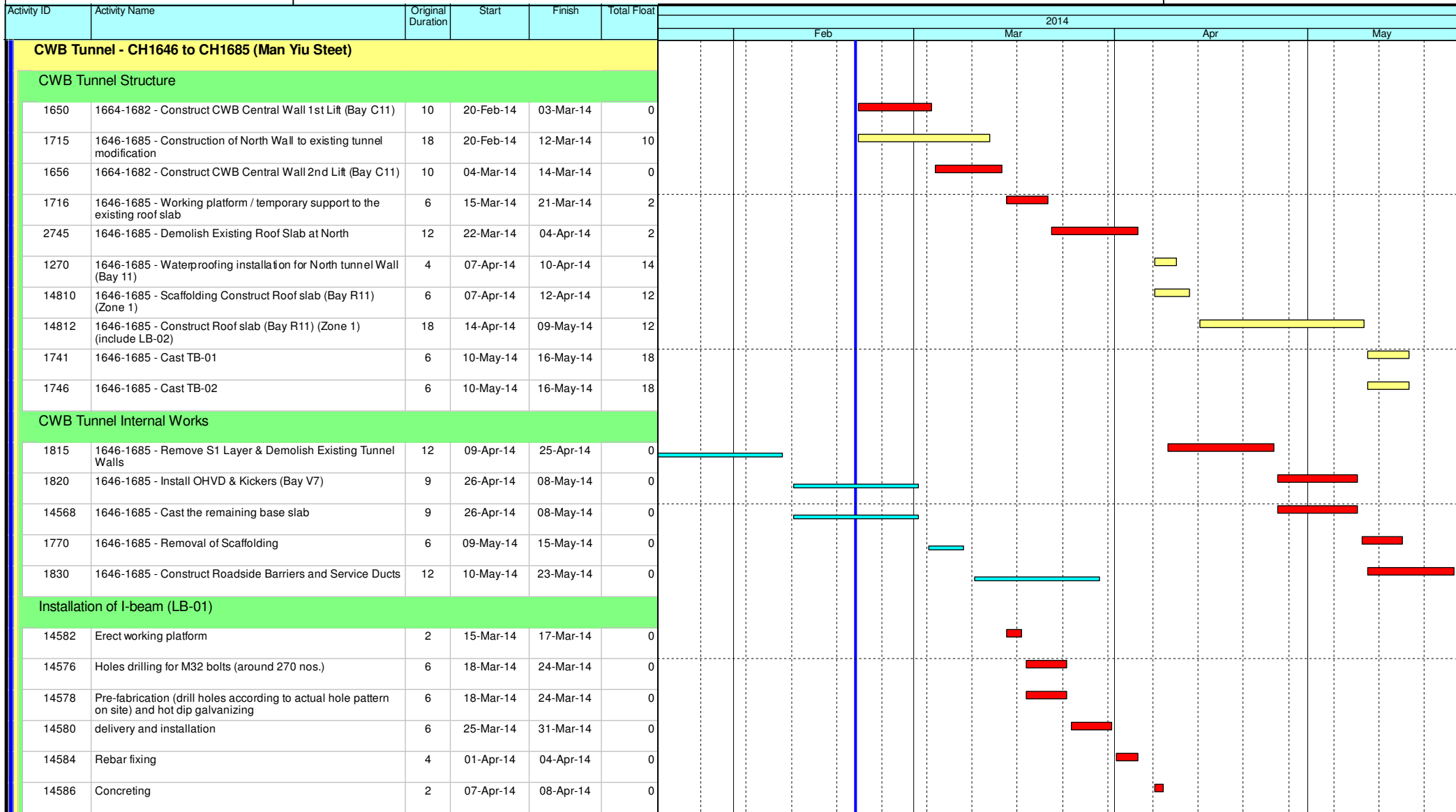
Project ID: U041
Baseline: DCP6-2
Layout: Update Three Month Rolling U041
Page 2 of 7

Date	Revision	Checked	Appro...
20-Jan-14	U040	AT	RW
20-Feb-14	U041	AT	RW

Data Date: 20-Feb-14

HY/2009/18 Central - Wan Chai Bypass (Central Interchange)

TASK filters: 3 Months_1, Not HL.



- ◆ Current Milestone
- █ Level of Effort
- ▲ Baseline Milestone
- █ Critical Remaining Work
- █ Remaining Work
- █ Project Baseline
- █ Actual Work

Leighton Contractors (Asia) Limited Programme Update 41 (February 2014) THREE MONTH ROLLING

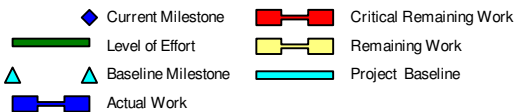
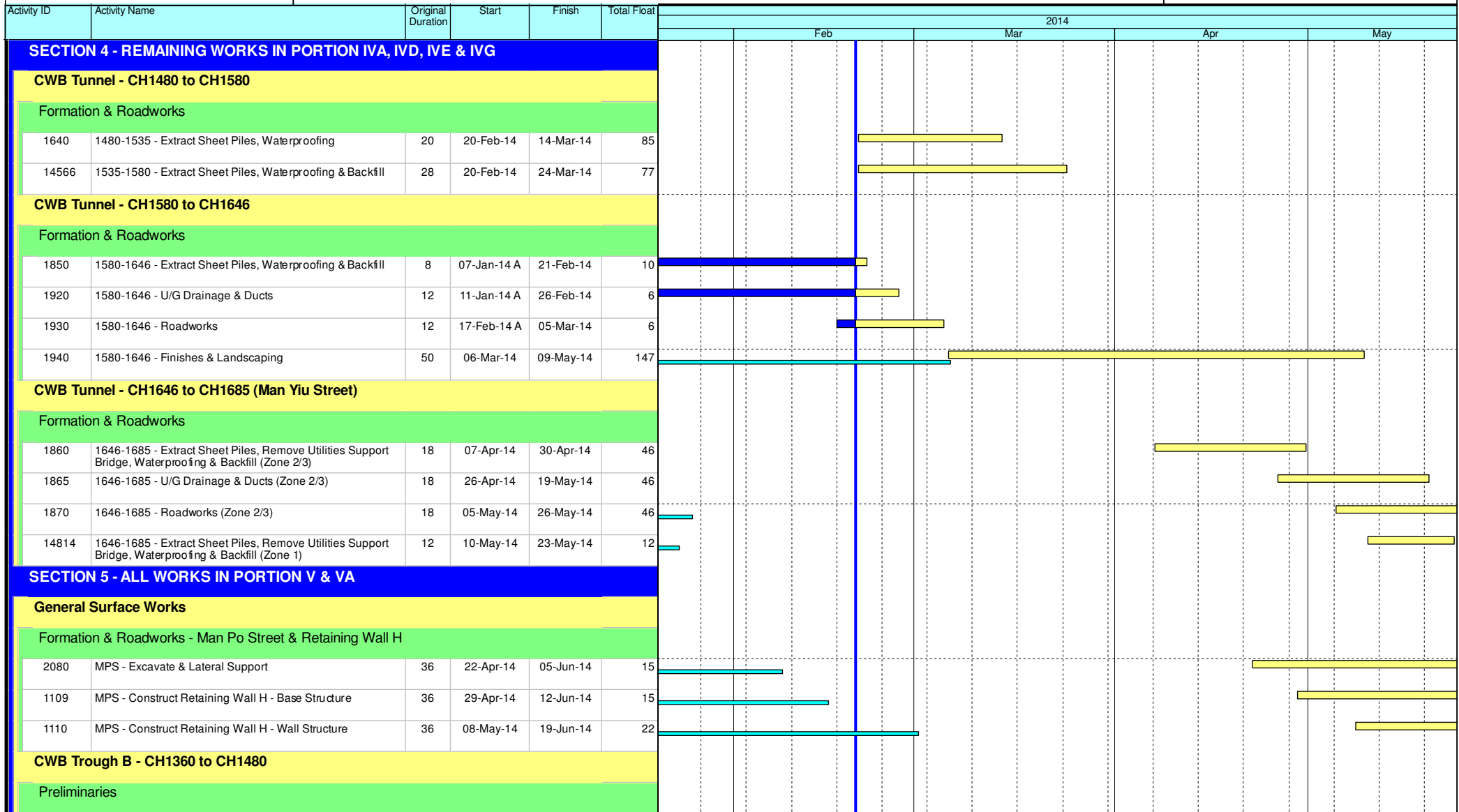
Project ID: U041
 Baseline: DCP6-2
 Layout: Update Three Month Rolling U041
 Page 3 of 7

Date	Revision	Checked	Appro...
20-Jan-14	U040	AT	RW
20-Feb-14	U041	AT	RW

Data Date: 20-Feb-14

HY/2009/18 Central - Wan Chai Bypass (Central Interchange)

TASK filters: 3 Months_1, Not HL.



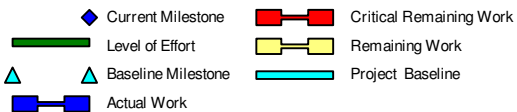
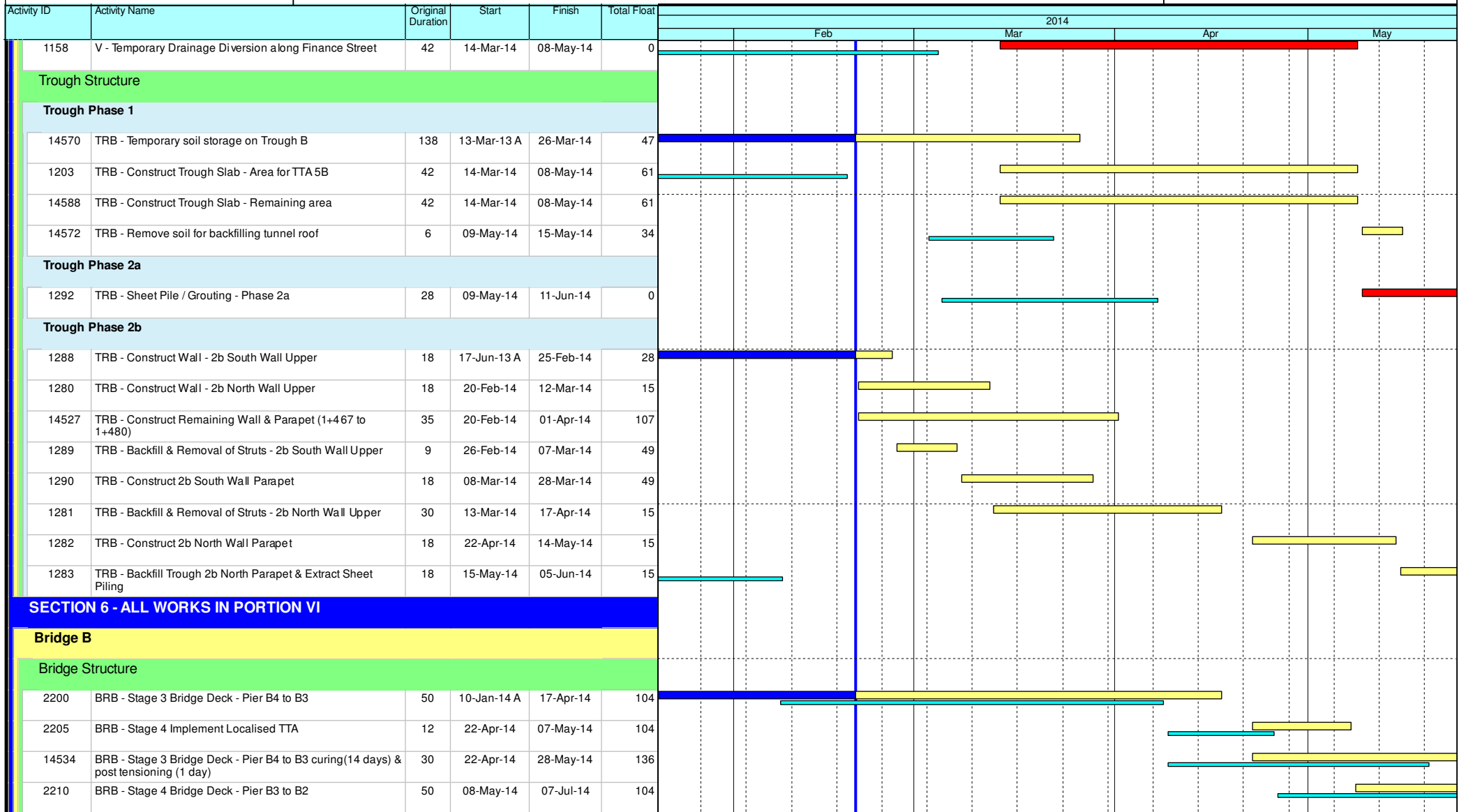
Leighton Contractors (Asia) Limited Programme Update 41 (February 2014) THREE MONTH ROLLING

Project ID: U041
Baseline: DCP6-2
Layout: Update Three Month Rolling U041
Page 4 of 7

Date	Revision	Checked	Appro...
20-Jan-14	U040	AT	RW
20-Feb-14	U041	AT	RW

HY/2009/18 Central - Wan Chai Bypass (Central Interchange)

TASK filters: 3 Months_1, Not HL.



Leighton Contractors (Asia) Limited Programme Update 41 (February 2014) THREE MONTH ROLLING

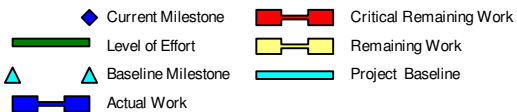
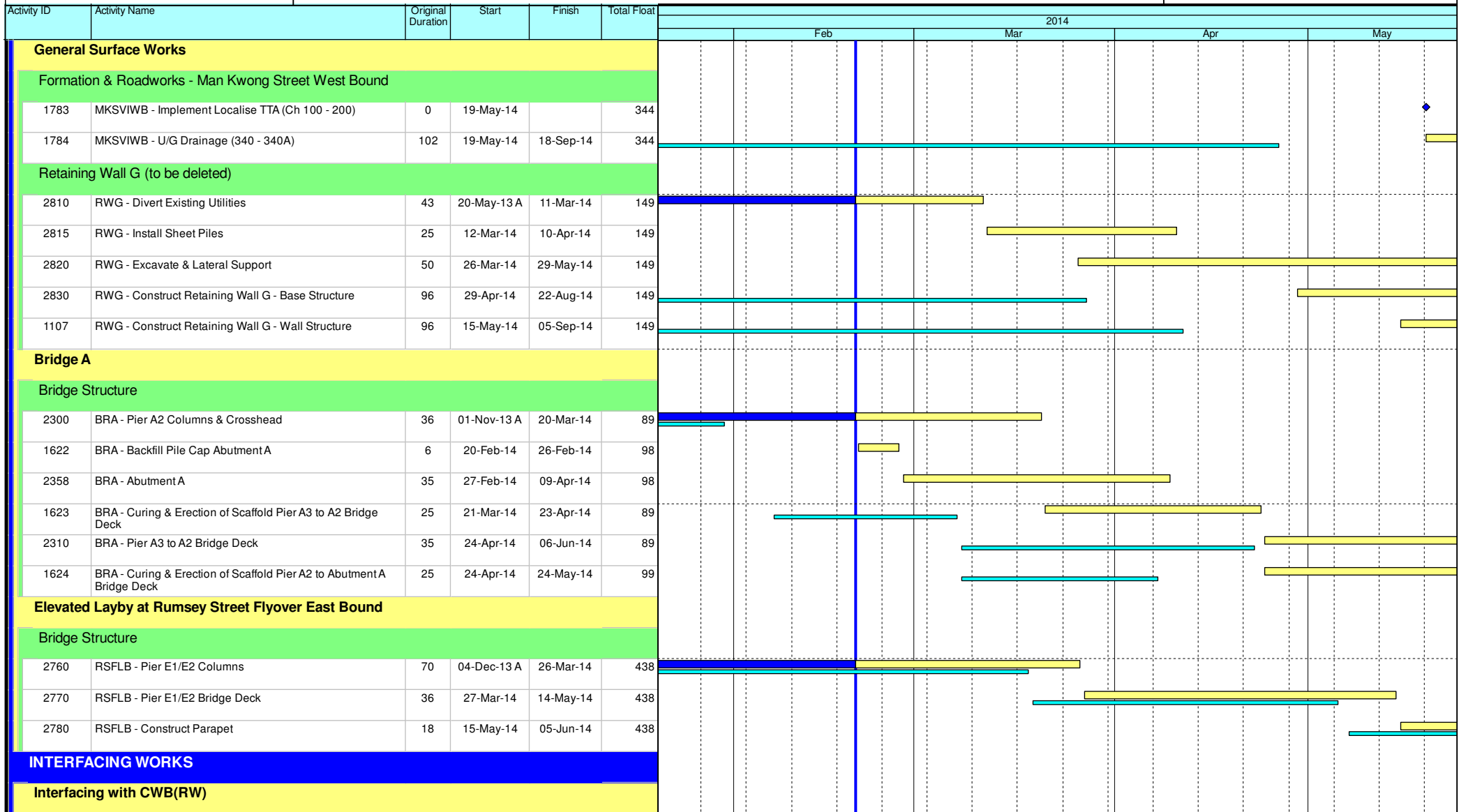
Project ID: U041
Baseline: DCP6-2
Layout: Update Three Month Rolling U041
Page 5 of 7

Date	Revision	Checked	Appro...
20-Jan-14	U040	AT	RW
20-Feb-14	U041	AT	RW

Data Date: 20-Feb-14

HY/2009/18 Central - Wan Chai Bypass (Central Interchange)

TASK filters: 3 Months_1, Not HL.



Leighton Contractors (Asia) Limited Programme Update 41 (February 2014) THREE MONTH ROLLING

Project ID: U041
Baseline: DCP6-2
Layout: Update Three Month Rolling U041
Page 6 of 7

Date	Revision	Checked	Appro...
20-Jan-14	U040	AT	RW
20-Feb-14	U041	AT	RW

Activity ID	Activity Name	Original Duration	Start	Finish	Total Float	2014											
						Feb			Mar			Apr			May		
4215	INT - Section 3B - Joint Inspection & Handover to CWB(RW)	14	27-Jan-14 A	10-Feb-14 A													
4200	INT - Section 4B - Joint Inspection & Handover to CWB(RW)	14	01-Mar-14	14-Mar-14	-124												
Key Dates for Completion of Sections																	
Anticipated Completion																	
1034	KD5 - Anticipated Completion	0		25-Jan-14 A													
Contract Required Completion																	
1035	KD5 - Section 3B Complete (DAY-1229)	0		25-Jan-14 A													
Portion Handover Dates																	
Anticipated Handover																	
2910	Portion IIC Handover (KD5 + 28 days)	0		21-Feb-14*	7												
2900	Portion IVC Handover (KD8 + 28 days)	0		14-Mar-14*	-124												
2905	Portion IVF Handover (KD8 + 28 days)	0		14-Mar-14*	-124												
Contract Required Handover																	
3005	Portion IVC Handover (KD8 + 28 days)	0		20-Feb-14*	-101												
3015	Portion IVF Handover (KD8 + 28 days)	0		20-Feb-14*	-101												
3020	Portion IIC Handover (KD5 + 28 days)	0		21-Feb-14*	7												

- Current Milestone
- Critical Remaining Work
- Level of Effort
- Remaining Work
- Baseline Milestone
- Project Baseline
- Actual Work

Leighton Contractors (Asia) Limited

Programme Update 41 (February 2014)

THREE MONTH ROLLING

Project ID: U041
 Baseline: DCP6-2
 Layout: Update Three Month Rolling U041
 Page 7 of 7

Date	Revision	Checked	Appro...
20-Jan-14	U040	AT	RW
20-Feb-14	U041	AT	RW

Activity ID	Activity Name	Rem Dur	Start	Finish	2014																
					February					March				April				May			
					0	27	03	10	17	24	03	10	17	24	31	07	14	21	28	05	12
3MRP - Feb 2014 to May 2014																					
01 - CONTRACT DATES																					
01.2 - Possession of Site																					
0120-3000	Possession to Portion IVA	0	09-Mar-14*																		
0120-3100	Possession to Portion IVB	0	09-Mar-14*																		
0120-3200	Possession to Portion IIA	0	09-Mar-14*																		
02 - PRE-CONSTRUCTION WORKS																					
02.2 - Contractor's Submission																					
0220-1510	Road Work Materials/Street Furnitures - Submission	48	20-Feb-14	08-Apr-14																	
0220-1520	Road Work Materials/Street Furniture - ER Review/Comment	48	04-Mar-14	20-Apr-14																	
0220-1530	Road Work Materials/Street Furniture - Resubmission	48	16-Mar-14	02-May-14																	
0220-1540	Road Work Materials/Street Furniture - ER Approval	48	25-Mar-14	11-May-14																	
0220-1550	Road Work Materials/Street Furniture - Procurement & Delivery	60	25-Mar-14	23-May-14																	
0220-1560	Noise Enclosure/Barrier - Steel Material Submission	28	02-Jan-14 A	19-Mar-14																	
0220-1570	Noise Enclosure/Barrier - Steel Material Comment/Resubmission	18	12-Feb-14 A	06-Apr-14																	
0220-1580	Noise Enclosure/Barrier - Steel Material No Adverse Comment	12	07-Apr-14	18-Apr-14																	
02.3 - Method Statement / Shop Drawings																					
0230-1580	MS Bridge F1A/F2A Int. Noise Semi Enclosure - Submission	28	10-Mar-14*	06-Apr-14																	
0230-1590	MS Bridge F1A/F2A Int. Noise Semi Enclosure - ER Review / Comment	15	07-Apr-14	21-Apr-14																	
0230-1600	MS Bridge F1A/F2A Int. Noise Semi Enclosure - Resubmission	12	22-Apr-14	03-May-14																	
0230-1610	MS Bridge F1A/F2A Int. Noise Semi Enclosure - No Adverse Comment	15	04-May-14	18-May-14																	
0230-1500	MS Bridge Demolition Pier E3 to P20 - Submission	24	01-Apr-14*	24-Apr-14																	
0230-1510	MS Bridge Demolition Pier E3 to P20 - ER Review & Comment	18	25-Apr-14	12-May-14																	
0230-1520	MS Bridge Demolition Pier E3 to P20 - Resubmission	18	13-May-14	30-May-14																	
0230-1940	MS Beam Erection D1 to E2 - Submission	18	10-Feb-14 A	09-Mar-14																	
0230-1950	MS Beam Erection D1 to E2 - Comment/Resubmission	18	10-Mar-14	27-Mar-14																	
0230-1960	MS Beam Erection D1 to E2 - No Adverse Comment	12	28-Mar-14	08-Apr-14																	
0230-2030	MS Beam Erection F8 to F15 - Submission	0	02-Jan-14 A	06-Feb-14 A																	
0230-2040	MS Beam Erection F8 to F15 - Review/Comment	0	07-Feb-14 A	18-Feb-14 A																	
0230-2050	MS Beam Erection F8 to F15 - Resubmission	9	19-Feb-14 A	28-Feb-14																	
0230-2060	MS Beam Erection F8 to F15 - No Adverse Comment	15	01-Mar-14	15-Mar-14																	
0230-2080	MS ADB Pre-bored H-pile - No Adverse Comment	0	02-Dec-13 A	19-Feb-14 A																	
0230-1420	MS Permanent Noise Barrier Cantilever - Submission	18	10-Feb-14 A	09-Mar-14																	
0230-1430	MS Permanent Noise Barrier Cantilever - ER Review & Comment	15	10-Mar-14	24-Mar-14																	
0230-1440	MS Permanent Noise Barrier Cantilever - Resubmission	15	25-Mar-14	08-Apr-14																	
0230-1450	MS Permanent Noise Barrier Cantilever - No Adverse Comment	15	09-Apr-14	23-Apr-14																	
0230-1780	MS Temporary Bridge TD - Submission	9	02-Jan-14 A	28-Feb-14																	
0230-1790	MS Temporary Bridge TD - ER Review & Comment	18	01-Mar-14	18-Mar-14																	
0230-1800	MS Temporary Bridge TD - Resubmission	18	19-Mar-14	05-Apr-14																	
0230-1810	MS Temporary Bridge TD - No Adverse Comment	18	06-Apr-14	23-Apr-14																	
02.4 - Contractor's Design and Build Items																					
0240-1041	Temp Bridge "TD" Design - Submission	12	01-Mar-13 A	03-Mar-14																	
0240-1042	Temp Bridge "TD" Design - ER review and comment	15	04-Mar-14	18-Mar-14																	
0240-1043	Temp Bridge "TD" Design - Resubmission	15	19-Mar-14	02-Apr-14																	

- Remaining Level of Effort
- Actual Level of Effort
- Actual Work
- Remaining Work
- Critical Remaining Work
- ◆ Milestone

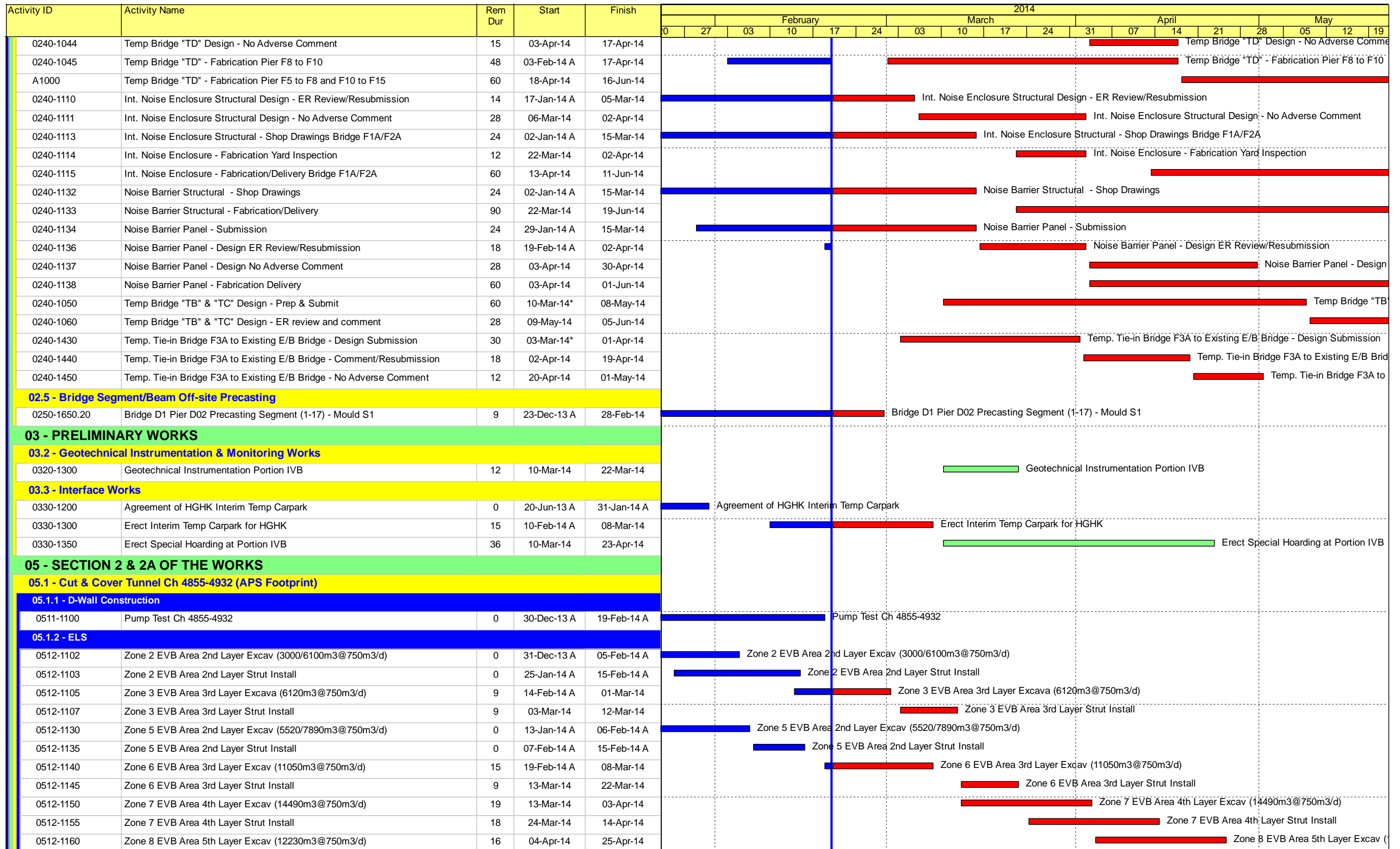
Contract HY/2009/19

Three Month Rolling Programme (20 Feb 2014 to 19 May 2014)

3MRP

3MRP - Feb 2014 to May 2014

Page 1 of 8



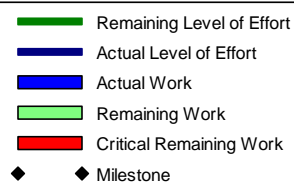
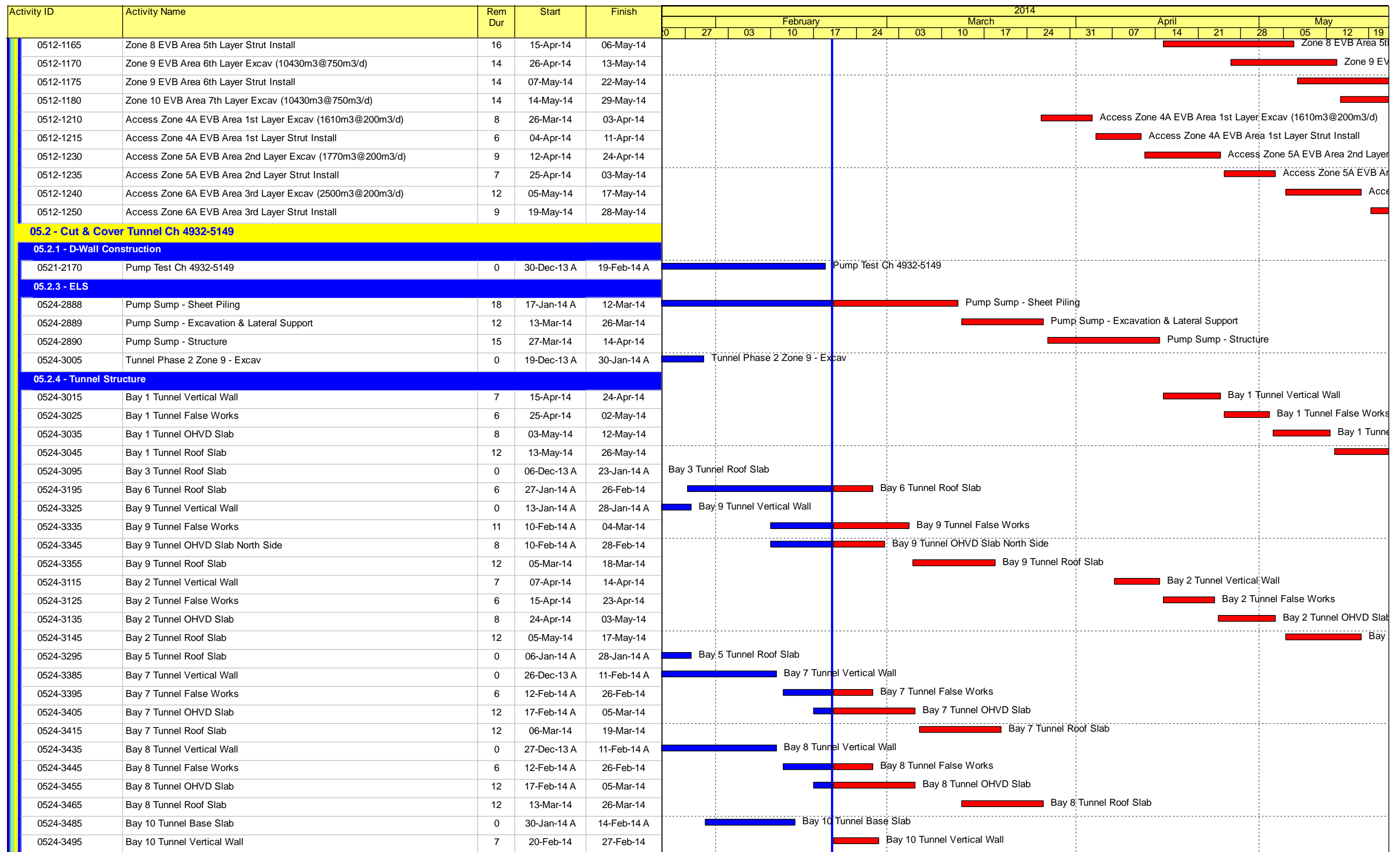
- Remaining Level of Effort
- Actual Level of Effort
- Actual Work
- Remaining Work
- Critical Remaining Work
- ◆ Milestone

Contract HY/2009/19
Three Month Rolling Programme (20 Feb 2014 to 19 May 2014)

3MRP

3MRP - Feb 2014 to May 2014

Page 2 of 8



Contract HY/2009/19

Three Month Rolling Programme (20 Feb 2014 to 19 May 2014)

3MRP

3MRP - Feb 2014 to May 2014

Activity ID	Activity Name	Rem Dur	Start	Finish	2014																		
					February					March					April					May			
					0	27	03	10	17	24	03	10	17	24	31	07	14	21	28	05	12	19	
0524-3505	Bay 10 Tunnel False Works	6	05-Mar-14	11-Mar-14																			
0524-3515	Bay 10 Tunnel OHVD Slab	8	12-Mar-14	20-Mar-14																			
0524-3525	Bay 10 Tunnel Roof Slab	12	21-Mar-14	03-Apr-14																			
0524-3535	Bay 11 Tunnel Base Slab	3	06-Feb-14 A	22-Feb-14																			
0524-3545	Bay 11 Tunnel Vertical Wall	7	24-Feb-14	03-Mar-14																			
0524-3555	Bay 11 Tunnel False Works	6	31-Mar-14	07-Apr-14																			
0524-3565	Bay 11 Tunnel OHVD Slab	8	08-Apr-14	16-Apr-14																			
0524-3575	Bay 11 Tunnel Roof Slab	12	17-Apr-14	03-May-14																			
0524-3585	Bay 12 Tunnel Base Slab	7	27-Feb-14	06-Mar-14																			
0524-3595	Bay 12 Tunnel Vertical Wall	7	07-Mar-14	14-Mar-14																			
0524-3605	Bay 12 Tunnel False Works	6	15-Mar-14	21-Mar-14																			
0524-3615	Bay 12 Tunnel OHVD Slab	8	28-Mar-14	07-Apr-14																			
0524-3625	Bay 12 Tunnel Roof Slab	12	08-Apr-14	23-Apr-14																			
0524-3635	Bay 13 Tunnel Base Slab	7	24-Feb-14	03-Mar-14																			
0524-3645	Bay 13 Tunnel Vertical Wall	7	04-Mar-14	11-Mar-14																			
0524-3655	Bay 13 Tunnel False Works	6	12-Mar-14	18-Mar-14																			
0524-3665	Bay 13 Tunnel OHVD Slab	8	19-Mar-14	27-Mar-14																			
0524-3675	Bay 13 Tunnel Roof Slab	12	28-Mar-14	11-Apr-14																			
0524-3685	Waterproof Top Slab Bays 12 and 13	12	15-Apr-14	30-Apr-14																			
0524-3475	Waterproof Top Slab Bay 5 to Bay 9	12	02-May-14	15-May-14																			
05.2.5 - Road & Miscellaneous Works																							
0525-2950	Backfill above Tunnel Structure Bay 10 to Bay 13	11	28-Apr-14	10-May-14																			
0525-2940	Backfill above Tunnel Structure Bay 5 to Bay 9	15	16-May-14	03-Jun-14																			
06 - SECTION 3 OF THE WORKS																							
06.1 - Westbound - Pier 29-34																							
0610-2124	Pier 29-4 Bored Pile	6	07-Jan-14 A	26-Feb-14																			
0610-2126	Pier 29-3 Bored Pile	30	27-Feb-14	02-Apr-14																			
06.2 - Box Culvert U1																							
0620-2630	1500mm Drainage MH 1-42 to 1-43 - Excavation	7	24-Feb-14	03-Mar-14																			
0620-2640	1500mm Drainage MH 1-42 to 1-43 - Pipe Laying	5	04-Mar-14	08-Mar-14																			
0620-2650	1500mm Drainage Construct MH 1-42	12	10-Mar-14	22-Mar-14																			
0620-2660	1500mm Drainage MH 1-42 to 1-43 - Backfill + Extract Sheet Pile	9	24-Mar-14	02-Apr-14																			
06.3 - Admin Building																							
0630-3100	Predrill for Adm Building (27 no) (3 set)	3	31-Oct-13 A	22-Feb-14																			
0630-3105	Admin Bldg Pile G.I. Report / Founding Level	18	13-Jan-14 A	12-Mar-14																			
0630-3111	Admin Bldg Pre-bored H-pile GL A-F (31 nos.)	90	24-Feb-14	13-Jun-14																			
0630-3112	Admin Bldg Pre-bored H-pile GL G-N (25 nos.)	72	03-Mar-14	29-May-14																			
09 - SECTION 6 OF THE WORKS																							
09.2 - Westbound - Pier 26-27																							
0920-2100	Pre-drilling for Piling at IVB (pier 26) (possession on 25Feb14) (2 no)	12	24-Apr-14	08-May-14																			
0920-2105	Pier 26 Pile G.I. Final Report / Founding Level	12	09-May-14	22-May-14																			
10 - SECTION X OF THE WORKS																							
10.1 - E/B Bridges (Bridge D, E and F)																							
10.1.1 - Marine Pier Construction																							

- █ Remaining Level of Effort
- █ Actual Level of Effort
- █ Actual Work
- █ Remaining Work
- █ Critical Remaining Work
- ◆ Milestone

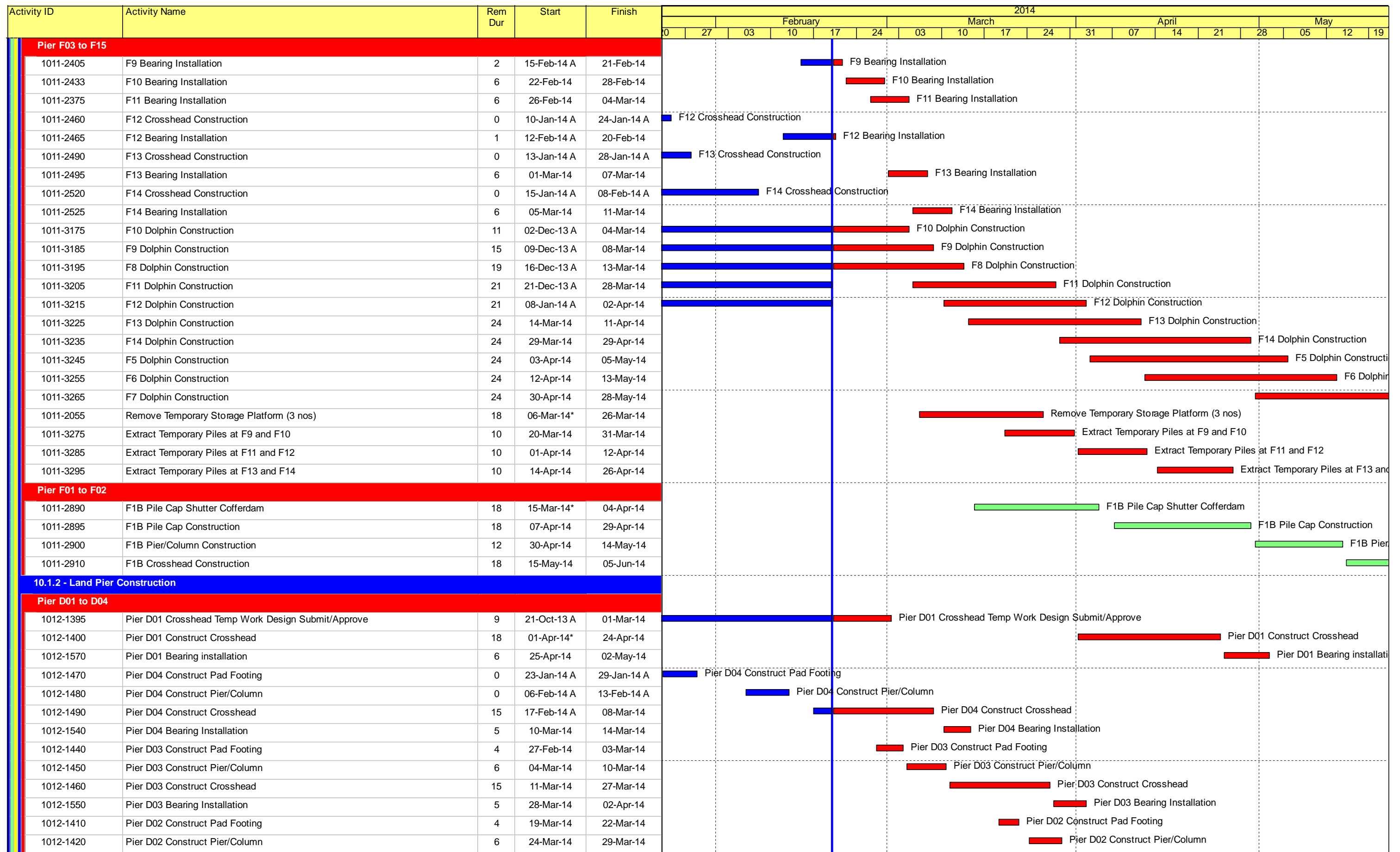
Contract HY/2009/19

Three Month Rolling Programme (20 Feb 2014 to 19 May 2014)

3MRP

3MRP - Feb 2014 to May 2014

Page 4 of 8



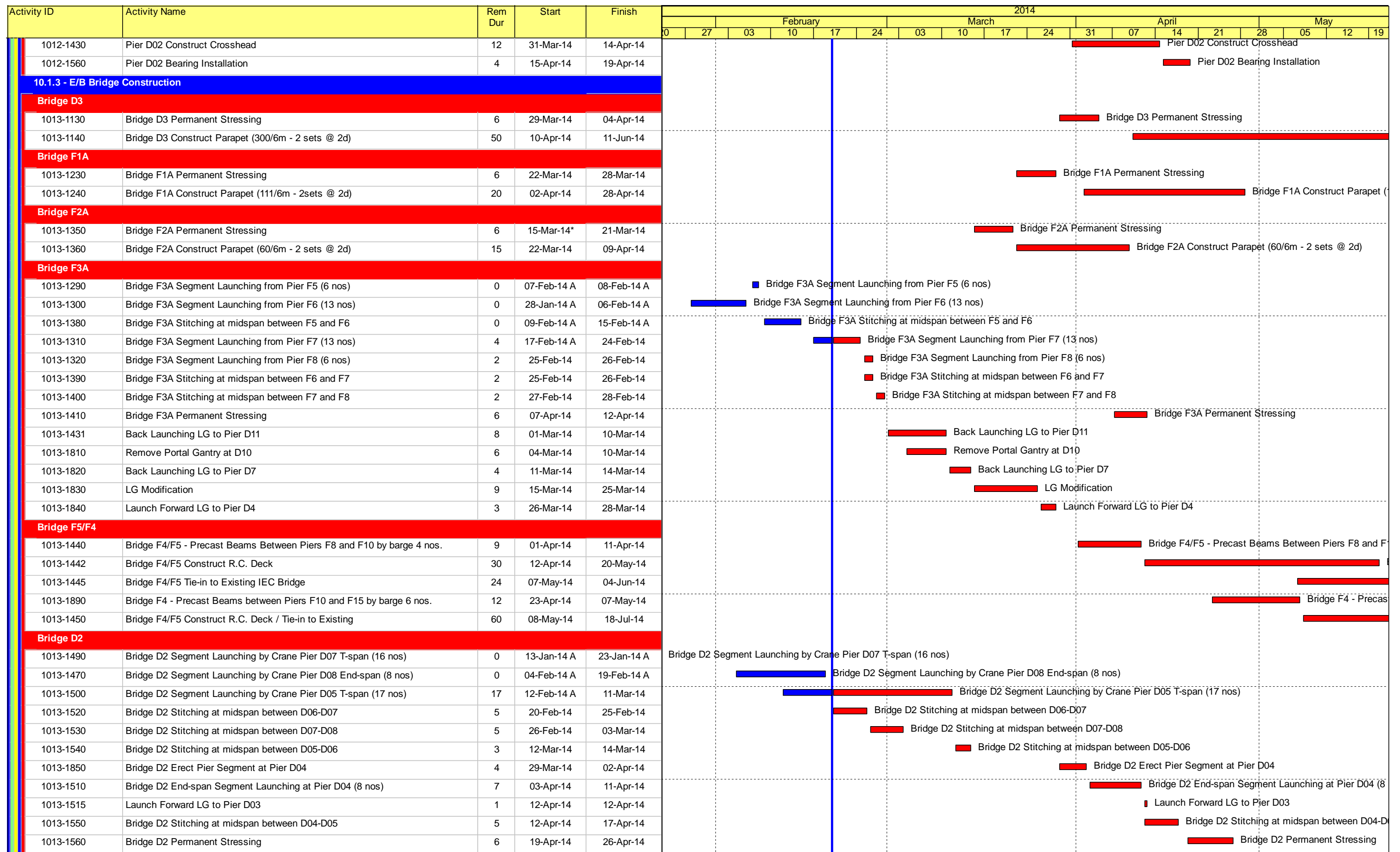
- Remaining Level of Effort
- Actual Level of Effort
- Actual Work
- Remaining Work
- Critical Remaining Work
- ◆ Milestone

Contract HY/2009/19

Three Month Rolling Programme (20 Feb 2014 to 19 May 2014)

3MRP

3MRP - Feb 2014 to May 2014



- █ Remaining Level of Effort
- █ Actual Level of Effort
- █ Actual Work
- █ Remaining Work
- █ Critical Remaining Work
- ◆ Milestone

Contract HY/2009/19

Three Month Rolling Programme (20 Feb 2014 to 19 May 2014)

3MRP

3MRP - Feb 2014 to May 2014

Activity ID	Activity Name	Rem Dur	Start	Finish	2014																		
					February					March				April				May					
					0	27	03	10	17	24	03	10	17	24	31	07	14	21	28	05	12	19	
1013-1570	Bridge D2 Construct Parapet (320/6m, 2 sets @ 2d)	54	29-Apr-14	03-Jul-14	[Gantt bar: 29-Apr-14 to 03-Jul-14]																		
Bridge D1																							
1013-1591	Bridge D1 Pier Segment Erection at Pier D03	4	14-Apr-14	17-Apr-14	[Gantt bar: 14-Apr-14 to 17-Apr-14]																		
1013-1592	Launch Forward LG to Pier D02	1	19-Apr-14	19-Apr-14	[Gantt bar: 19-Apr-14 to 19-Apr-14]																		
1013-1860	Bridge D1 Pier Segment Erection at Pier D03	4	22-Apr-14	25-Apr-14	[Gantt bar: 22-Apr-14 to 25-Apr-14]																		
1013-1600	Bridge D1 Segment Launching T-span Pier D03 (16 nos)	4	26-Apr-14	30-Apr-14	[Gantt bar: 26-Apr-14 to 30-Apr-14]																		
1013-1605	Bridge D1 Segment Launching End-span at Pier D04 (7 nos)	4	02-May-14	06-May-14	[Gantt bar: 02-May-14 to 06-May-14]																		
1013-1630	Bridge D1 Stitching at midspan between D03-D04	5	07-May-14	12-May-14	[Gantt bar: 07-May-14 to 12-May-14]																		
1013-1870	Launch Forward LG to Pier D01	1	17-May-14	17-May-14	[Gantt bar: 17-May-14 to 17-May-14]																		
1013-1880	Bridge D1 Pier Segment Erection at Pier D01	3	19-May-14	21-May-14	[Gantt bar: 19-May-14 to 21-May-14]																		
All E/B Bridges (Common)																							
1013-1770	Procurement of Parapet Sub-contractor	0	21-Oct-13 A	10-Feb-14 A	[Gantt bar: 21-Oct-13 A to 10-Feb-14 A]																		
1013-1780	Parapet Temp. Work Design + ICE	12	11-Feb-14 A	05-Mar-14	[Gantt bar: 11-Feb-14 A to 05-Mar-14]																		
1013-1790	Parapet Temp. Work Design ER No Adverse Comment	15	06-Mar-14	22-Mar-14	[Gantt bar: 06-Mar-14 to 22-Mar-14]																		
1013-1800	Parapet Temp. Work Fabrication	18	06-Mar-14	26-Mar-14	[Gantt bar: 06-Mar-14 to 26-Mar-14]																		
1013-1710	Permanent Noise Barrier Type C1 E/B Bridge Ch 1059-1362 (304m)	42	12-May-14	30-Jun-14	[Gantt bar: 12-May-14 to 30-Jun-14]																		
10.1.4 - Bridge E / Hing Fat Slip Road																							
Pier Construction																							
1014-1040	Pier E1b Construct Pier/Column	0	16-Jan-14 A	29-Jan-14 A	[Gantt bar: 16-Jan-14 A to 29-Jan-14 A]																		
1014-1070	Pier E1a Construct Pier/Column	0	25-Jan-14 A	31-Jan-14 A	[Gantt bar: 25-Jan-14 A to 31-Jan-14 A]																		
1014-1050	Pier E1b Construct Crosshead	18	20-Feb-14	12-Mar-14	[Gantt bar: 20-Feb-14 to 12-Mar-14]																		
1014-1080	Pier E1a Construct Crosshead	18	20-Feb-14	12-Mar-14	[Gantt bar: 20-Feb-14 to 12-Mar-14]																		
1014-1090	Pier E1a/E1b Bearing installation	6	13-Mar-14	19-Mar-14	[Gantt bar: 13-Mar-14 to 19-Mar-14]																		
Bridge Construction																							
1014-1174	Bridge E - Pier E1 to E2 Install Precast Beam (3 nos.)	5	20-Mar-14	25-Mar-14	[Gantt bar: 20-Mar-14 to 25-Mar-14]																		
1014-1175	Bridge E - Pier E1 to D1 Install Precast Beam (3 nos.)	5	12-May-14	16-May-14	[Gantt bar: 12-May-14 to 16-May-14]																		
10.5 - Temporary Bridge																							
10.5.1 - Temporary Bridge 'TA'																							
1051-1017	Temporary Bridge TA1 - Bridge Decking + Tie-in to Existing HFSR	6	23-Sep-13 A	10-May-14	[Gantt bar: 23-Sep-13 A to 10-May-14]																		
1051-1018	Temporary Bridge TA1 - Parapet	6	13-Jan-14 A	10-May-14	[Gantt bar: 13-Jan-14 A to 10-May-14]																		
10.5.3 - Temporary Bridge 'TD'																							
1053-1050	Temporary Bridge "TD" Between Piers F8 and F10 - Structural Support	18	19-Apr-14	12-May-14	[Gantt bar: 19-Apr-14 to 12-May-14]																		
1053-1060	Temporary Bridge "TD" Between Piers F8 and F10 - Bridge Deck & Parapet	24	13-May-14	10-Jun-14	[Gantt bar: 13-May-14 to 10-Jun-14]																		
10.6 - Tunnel Approach Ramp																							
10.6.1 - Approach Ramp (Excluding Portion IIB)																							
Bored Piles																							
1061-1670	Remaining Pre-drilling for Approach Ramp Bored Piles	36	19-Jul-13 A	02-Apr-14	[Gantt bar: 19-Jul-13 A to 02-Apr-14]																		
1061-1750	Bored Pile Ramp - BN37	0	13-Jan-14 A	24-Jan-14 A	[Gantt bar: 13-Jan-14 A to 24-Jan-14 A]																		
1061-1720	Bored Pile Ramp - BM39	4	10-Jan-14 A	24-Feb-14	[Gantt bar: 10-Jan-14 A to 24-Feb-14]																		
1061-1800	Bored Pile Ramp - BM47	0	22-Jan-14 A	07-Feb-14 A	[Gantt bar: 22-Jan-14 A to 07-Feb-14 A]																		
1061-1770	Bored Pile Ramp - BM35	7	08-Feb-14 A	27-Feb-14	[Gantt bar: 08-Feb-14 A to 27-Feb-14]																		
1061-1780	Bored Pile Ramp - BM48	8	12-Feb-14 A	28-Feb-14	[Gantt bar: 12-Feb-14 A to 28-Feb-14]																		
1061-1785	Bored Pile Ramp - BM36	15	28-Feb-14	17-Mar-14	[Gantt bar: 28-Feb-14 to 17-Mar-14]																		
1061-1790	Bored Pile Ramp - BM30	15	01-Mar-14	18-Mar-14	[Gantt bar: 01-Mar-14 to 18-Mar-14]																		

- Remaining Level of Effort
- Actual Level of Effort
- Actual Work
- Remaining Work
- Critical Remaining Work
- ◆ Milestone

Contract HY/2009/19

Three Month Rolling Programme (20 Feb 2014 to 19 May 2014)

3MRP

3MRP - Feb 2014 to May 2014

Activity ID	Activity Name	Rem Dur	Start	Finish	2014																															
					February					March				April				May																		
					0	27	03	10	17	24	03	10	17	24	31	07	14	21	28	05	12	19														
1061-1810	Bored Pile Ramp - BM33	15	18-Mar-14	03-Apr-14																																Bored Pile Ramp - BM33
1061-1820	Bored Pile Ramp - BM29	15	19-Mar-14	04-Apr-14																																Bored Pile Ramp - BM29
1061-1830	Bored Pile Ramp - BM32	15	04-Apr-14	24-Apr-14																																Bored Pile Ramp - BM32
1061-1840	Bored Pile Ramp - BM28	15	07-Apr-14	25-Apr-14																																Bored Pile Ramp - BM28
1061-1850	Bored Pile Ramp - BM34	15	25-Apr-14	13-May-14																																Bored Pile
1061-1860	Bored Pile Ramp - BM31	15	26-Apr-14	14-May-14																																Bored Pi
10.7 - Section X - Miscellaneous Works																																				
10.7.1 - TTM Stages																																				
1071-1005	TTA Stage 2A - TMLG / TD / Police Consultation and Endorsement	36	03-May-14	14-Jun-14																																

- Remaining Level of Effort
- Actual Level of Effort
- Actual Work
- Remaining Work
- Critical Remaining Work
- Milestone

Contract HY/2009/19

Three Month Rolling Programme (20 Feb 2014 to 19 May 2014)

3MRP

3MRP - Feb 2014 to May 2014

Activity ID	Activity Name	Original Duration	Start	Finish	Qtr 1, 2014		Qtr 2, 2014			
					Feb	Mar	Apr	May	Jun	
					HY/2010/08: CWB-SR8 Three Months Rolling Programm					
Works in TS3										
TS3 East & West Reclamation Works										
TS3E - Reclamation (Advance Works)										
TS3E.MW.1030	TS3E North - Rockfill + Levelling Works	13	20-Jan-14 A	07-Feb-14 A	TS3E North - Rockfill + Levelling Works					
TS3E.MW.1080	TS3E South - Dredging Works (Type 3)	19	12-Mar-14*	02-Apr-14	TS3E South - Dredging Works (Type 3)					
TS3E.MW.1085	TS3E South - Dredging Works (Type 1 & 2)	28	03-Apr-14	12-May-14	TS3E South - Dredging Works (Type 1 & 2)					
TS3E.MW.1090	TS3E South - Rockfill + Levelling	20	02-May-14	26-May-14	TS3E South - Rockfill + Levelling					
TS3E.MW.1110	TS3E South - Commence Water Intake Diversion	0	29-May-14		TS3E South - Commence Water Intake Diversion					
TS3E.MW.1100	TS3E South - Seawall Block Installation	48	17-May-14	14-Jul-14	TS3E South - Seawall Block Installation					
Works in SR8 (Open Cut Method)										
SR8 - Cofferdam & Cut & Cover Tunnel Works										
SR8 East Bound - (Seaside to Victoria Road / IEC Central Divider)										
TTA Stage 0 - East Bound										
Stage 0B - East Bound (Seaside) (Ref. DRG. No. CDD/SR8/081)										
SR8.EB.0240	Demolish Island / Construct & Relocate New Bus Stop (West of Footbridge)	24	16-Nov-13 A	21-Mar-14	Demolish Island / Construct & Relocate New Bus Stop (West of Footbridge)					
Stage 1A - East Bound (Seaside) (Ref. DRG. No. CDD/SR8/082)										
SR8.EB.1040	Carry out Stage 1A Pipe Piling Work (A25, A28-A31, B9, B12-B13)	28	09-Jan-14 A	08-Feb-14 A	Carry out Stage 1A Pipe Piling Work (A25, A28-A31, B9, B12-B13)					
SR8.EB.1060	Trim down the Sheet Pile and Pipe Pile and construct the Gas Main Trough	12	08-Mar-14	21-Mar-14	Trim down the Sheet Pile and Pipe Pile and construct the Gas Main Trough					
SR8.EB.1050	Carry out Stage 1A TAM Grout	10	22-Mar-14	02-Apr-14	Carry out Stage 1A TAM Grout					
Water Mains										
SR8.EB.1150	Prelying of Water Main	7	20-Feb-14 A	27-Feb-14	Prelying of Water Main					
SR8.EB.1160	Excavation oand Expose Water Mains	7	20-Feb-14 A	27-Feb-14	Excavation oand Expose Water Mains					
SR8.EB.1170	Connect Water Lines including Test report	7	28-Feb-14	07-Mar-14	Connect Water Lines including Test report					
Telecoms (PCCW)										
SR8.EB.1240	Lay cable containment (PVC Pipes) for Telecom Cables (PCCW)	8	03-Mar-14	11-Mar-14	Lay cable containment (PVC Pipes) for Telecom Cables (PCCW)					
SR8.EB.1300	Excavate and Expose existing Telecom lines	8	03-Mar-14*	11-Mar-14	Excavate and Expose existing Telecom lines					
SR8.EB.1180	Pull Telecom Cables to New Containment	6	12-Mar-14	18-Mar-14	Pull Telecom Cables to New Containment					
SR8.EB.1190	Connect and Test Telecom Cables	6	19-Mar-14	25-Mar-14	Connect and Test Telecom Cables					
Gas Mains										
SR8.EB.1200	Construct and Install Gas Main Trough	12	10-Feb-14 A	28-Feb-14	Construct and Install Gas Main Trough					
SR8.EB.1280	Lay and Connect New Gas Line	12	01-Mar-14	14-Mar-14	Lay and Connect New Gas Line					



中國建築工程(香港)有限公司
CHINA STATE CONSTRUCTION ENGRG. (HONG KONG) LTD.

- █ Remaining Level of Effort
- █ Remaining Work
- █ Critical Remaining Work
- ◆ Milestone
- ◆ Milestone - Non C

Page 1 of 3

China State Construction Engineering (Hong Kong) Ltd

Contract No. HY/2010/08 - Central Wan Chai By Pass - Tunnel (SR8 Section)

Date	Revision	Checked	Approved
20-Feb-14	3 Month Rolling Programme	DL	

Activity ID	Activity Name	Original Duration	Start	Finish	Qtr 1, 2014		Qtr 2, 2014			
					Feb	Mar	Apr	May	Jun	
SR8.EB.1290	Backfill Trench	2	15-Mar-14	17-Mar-14		■ Backfill Trench				
Stage 1B - East Bound (Seaside) (Ref. DRG. No.CDD/SR8/082)		66	18-Mar-14	10-Jun-14						
SR8.EB.1400	Carry-out pretreatment for Stage 1B Sheet Pile	4	18-Mar-14	21-Mar-14		■ Carry-out pretreatment for Stage 1B Sheet Pile				
SR8.EB.1210	Carry-out preboring for Stage 1B Sheet Pile	8	22-Mar-14	31-Mar-14		■ Carry-out preboring for Stage 1B Sheet Pile				
SR8.EB.1220	Carry-out Stage 1B Sheet Piling works	6	29-Mar-14	04-Apr-14		■ Carry-out Stage 1B Sheet Piling works				
SR8.EB.1140	Carry out Pipe Piling Work (A21-A24,A24a,A24b, A34-A35, B2-B8, B14-B18) 20nos.	28	02-Apr-14	10-May-14			■ Carry out Pipe Piling Work (A21-A24,A24a,A24b, A34-A35, B2-B8, B14-B18) 20nos.			
SR8.EB.1255	Carry-out Stage 1B TAM Grout + Jet Grouting (12nos)	8	09-May-14	17-May-14			■ Carry-out Stage 1B TAM Grout + Jet Grouting (12nos)			
SR8.EB.1530	Pre-fabrication of Steel Traffic Deck	36	01-Apr-14*	19-May-14			■ Pre-fabrication of Steel Traffic Deck			
SR8.EB.1250	Install King Post for Traffic Deck (8 nos.)	12	19-May-14	31-May-14			■ Install King Post for Traffic Deck (8 nos.)			
SR8.EB.1260	Construct Traffic Deck and Temporary Road (including Road Marking & Traffic Signage)s	19	19-May-14	10-Jun-14			■ Construct Traffic Deck and Temporary Road (including Road Marking & Traffic Signage)s			
SR8 West Bound - Ch. 369.000 to 495.000 (Victoria Road / IEC Central Di		145	29-Nov-13 A	08-Jul-14						
TTA Stage 0 (West Bound)		145	29-Nov-13 A	08-Jul-14						
Stage 1A - West Bound (Inside VP) (Ref. DRG. No.CDD/SR8/085)		82	29-Nov-13 A	09-Apr-14						
SR8.WB.1115	Trench Excavation & Diversion of Existing 11kv Cable	64	20-Dec-13 A	08-Mar-14	■ Trench Excavation & Diversion of Existing 11kv Cable					
SR8.WB.1035.1	Pipe Piling Works Row B (B83-B92, B101-B113) - 16nos	4	10-Feb-14 A	11-Mar-14	■ Pipe Piling Works Row B (B83-B92, B101-B113) - 16nos					
SR8.WB.1080	Pipe Piling Work Row A (A119-A155) - 19nos	63	10-Feb-14 A	14-Mar-14	■ Pipe Piling Work Row A (A119-A155) - 19nos					
SR8.WB.1035.2	Install Sheet Pile for Road Diversion (Row C)	28	29-Nov-13 A	31-Mar-14	■ Install Sheet Pile for Road Diversion (Row C)					
SR8.WB.1100	Install King Post for Traffic Deck (9nos)	18	19-Mar-14*	09-Apr-14	■ Install King Post for Traffic Deck (9nos)					
Stage 1B - West Bound (Inside VP) (Ref. DRG. No.CDD/SR8/085)		77	01-Apr-14	08-Jul-14						
SR8.WB.1220	Carry out Stage 1B Sheet Pile Work	5	01-Apr-14	07-Apr-14		■ Carry out Stage 1B Sheet Pile Work				
SR8.WB.1230	Carry out Stage 1B Pipe Piling Work A118, B93-B100 (9nos)	12	08-Apr-14	24-Apr-14		■ Carry out Stage 1B Pipe Piling Work A118, B93-B100 (9nos)				
SR8.WB.1112	Carry out TAM Grout	26	25-Apr-14	27-May-14		■ Carry out TAM Grout				
SR8.WB.1240	Carry out Stage 1B TAM Grout	6	28-May-14	04-Jun-14		■ Carry out Stage 1B TAM Grout				
SR8.WB.1270	Construct Traffic Deck and Temporary Road (including Road Marking & Traffic Signage)s	30	03-May-14	10-Jun-14		■ Construct Traffic Deck and Temporary Road (including Road Marking & Traffic Signage)s				
SR8.WB.1250	Construction of Traffic Deck and Temporary Road	30	29-May-14	04-Jul-14		■ Construction of Traffic Deck and Temporary Road				
SR8.WB.1122	Carry out remaining Pipe Piling Works in VP	60	25-Apr-14	08-Jul-14		■ Carry out remaining Pipe Piling Works in VP				
SR8 Ch.369.000 to Ch.317.500 - (Inside Victoria Park to Tunnel Portal)		90	19-Dec-13 A	21-Jun-14						
Stage 4 - SR8 Ch.369.000 to Ch317.500 (Tunnel Portal) (Ref. DRG. No.CDD/SI		90	19-Dec-13 A	21-Jun-14						
SR8.VP.4010	Carry Out Stage 4 Sheet Pile Works	90	19-Dec-13 A	21-Jun-14			■ Carry Out Stage 4 Sheet Pile Works			
SR8 Ch 317.500 to Ch 210.000 - U-Structure & Slab (Victoria Park)		30	18-Dec-13 A	05-Mar-14						
Excavation and Lateral Support		30	18-Dec-13 A	05-Mar-14						
SR8_1760	Sheet pile driving	30	18-Dec-13 A	05-Mar-14	■ Sheet pile driving					
Tsing Fung St - RW & Subway Extension & Toe Wall at Hing Fat St		52	01-Apr-14	07-Jun-14						



中國建築工程(香港)有限公司
CHINA STATE CONSTRUCTION ENGRG. (HONG KONG) LTD.

- Remaining Level of Effort
- Remaining Work
- Critical Remaining Work
- ◆ Milestone
- ◆ Milestone - Non C

Page 2 of 3

China State Construction Engineering (Hong Kong) Ltd

Contract No. HY/2010/08 - Central Wan Chai By Pass - Tunnel (SR8 Section)

Date	Revision	Checked	Approved
20-Feb-14	3 Month Rolling Programme	DL	

Activity ID	Activity Name	Original Duration	Start	Finish	Qtr 1, 2014			Qtr 2, 2014		
					Feb	Mar	Apr	May	Jun	
Ret. Wall & TF Subway Extension (Portion V)										
Retaining Wall at Tsing Fung Street (Portion V)										
VP_1215	Construct Temporary Pedestrian Walkway	26	01-Apr-14*	07-May-14						Construct Temporary Pedestrian Walkway
VP_1205	Implement TTA	2	08-May-14	09-May-14						Implement TTA
VP_1225	Pre-boring for Sheet Pile	12	10-May-14	23-May-14						Pre-boring for Sheet Pile
VP_1235	TFS New Ret. Wall -sheet pile (400 m2)	12	24-May-14	07-Jun-14						
Works in Victoria Park										
Re-Provisioning Works										
Children's Playground										
Construction Works										
VP_1140	CP - Lighting System	4	24-Feb-14*	27-Feb-14						CP - Lighting System
VP_1230	CP - Install Safety Matting	4	24-Feb-14*	27-Feb-14						CP - Install Safety Matting
VP_1160	CP - Completion of KD4 - Works in Section1B	0		07-Mar-14						CP - Completion of KD4 - Works in Section1B
VP_1210	Site Clearance	10	25-Feb-14*	07-Mar-14						Site Clearance
VP_1560	Landscape Works	28	04-Feb-14 A	07-Mar-14						Landscape Works
Bowling Green Office										
BGO - Construction Works										
VP_1100.02	BGO - site clearance	24	02-Dec-13 A	19-Feb-14 A						BGO - site clearance
VP_1150	BGO - Underground utilities & foundation works	26	19-Mar-14*	22-Apr-14						BGO - Underground utilities & foundation works
VP_1180.01	BGO - Base Slab	24	23-Apr-14	22-May-14						BGO - Base Slab
VP_1180.02	BGO - Walls	36	09-May-14	20-Jun-14						
Tree Transplanting at Portion XIV (Victoria Park Open Space)										
VP_1040	Tree Transplanting & Upkeep at Portion XIV	347	16-Oct-13 A	10-Feb-15						
Mooring Components Upkeep (CBTS and ATS)										
MAR_1000	Mooring Upkeep at Portion III (3) - CBTS	574	15-May-14	09-Dec-15						
MAR_3020	Mooring Upkeep at Portion X(10) & XVI(16) - CBTS	979	15-May-14	17-Jan-17						
MAR_2000	Mooring Upkeep at Portion XIX(19) & XX(20) - ATS (if instructed by Engineer)	1399	21-Mar-13 A	20-Mar-17						
Works for Public Works Regional Laboratory (North Lantau)										
Maintenance and Upkeep of New PWRL (Portion XVII)										
PWRL_1050	Maintenance/ Upkeep of New PWRL	1301	19-Jul-13 A	13-Jan-18						